

High spirits and quality visitors at this year's Woodland Show

What a tremendous show the Confor Woodland Show 2019 has been.

A huge thank you to the show Committee, the sales team, the stewards, the Longleat forestry team and the dedicated team of volunteers who work so hard to put on a safe and successful show. This year the site was immaculate. The investment in on-site safety meant that set-up and breakdown ran smoothly and the addition of temporary tracking made for easy movement around the site.

The weather was reasonably kind to us and although visitor numbers were less than anticipated we were reminded that the Confor Woodland Show is primarily a trade show and trade over the two days was brisk.

The Confor seminar tent was a hive of activity with some excellent speakers contributing to lively debates that centred around Confor's #Think Global Plant Local campaign. Thanks goes to all the speakers, chairs and visitors who contributed, cajoled and challenged.

The Confor Woodland Show would not happen without the support of our exhibitors and sponsors so we are pleased to thank Aspen Fuel, Tilhill Forestry, Euroforest and Abbey Forestry.

Next year is APF 2020 so we hope to see you then.



The show in numbers

1550
visitors

100
exhibitors

24
demos

69
students

10
seminars

34
speakers

Discussing industry-wide approach to climate change



When discussing a huge topic like climate change, it's easy to feel small and insignificant - but an industry-wide approach to the challenge can make a huge difference.

After the Confor Woodland Show seminar programme put the emphasis on climate change, Andy Baker of Tilhill Forestry wrote: "The threat of climate change is, of course, enormous, and can often feel overwhelming. However, when you realise that you have an entire industry that is dedicated to the betterment of the environment, the mitigation of climate change and the enhancement of rural communities standing behind you, the task ahead seems less daunting. We may not always agree [on specifics], but we are all on the same team when it comes to the certainty that we need to plant more trees as part of the effort to fight against climate change!"

Eleanor Harris of Confor outlined the "ambitious but achievable" targets of 40,000 hectares of new woodland being planted annually across the UK by 2030, which Confor unveiled earlier this year. She stressed the weak performance in England and Wales, compared to Scotland, which planted more than 11,000 hectares in the last planting year, with most of the schemes under 100 hectares, including many small-scale woodland creation projects on farms. Additional funds have already been allocated by Scottish Government to drive up woodland creation in 2019/20.

Guy Shrubsole, of Friends of the Earth, outlined why his organisation aims to double UK tree cover. That scale of change could, he said, sequester 50 million tonnes of CO₂ per year - 10 per cent of the UK's current emissions.

This had to be part of a global response to the #climateemergency, he said - with afforestation needed across the world. He called for linked-up policy, as moves to reduce meat consumption - which in themselves could reduce emissions significantly - could help free up lower-grade pasture land for forestry. There was a need to "mitigate the cultural differences between farmers and foresters", Shrubsole argued, to deliver more agroforestry, while more community woodlands also had an important part to play.

"We need Government buy-in as the private sector can't do it all on their own." Shrubsole said.

Matt Taylor, of the Country Land and Business Association (CLA), said there were many regulatory, financial and bureaucratic barriers to get landowners to plant more trees.

"It's all about making afforestation viable for landowners, so how do we tip the scales in favour



Tilhill's Andy Baker and Alex MacKinnon attended the climate change seminars on behalf of Confor. Both show a keen interest in working towards tackling climate change and share their perspective of the seminars in blog posts published on the Tilhill blog webpage. See FTN resources for more details.

of planting?" he asked. A combination of more Defra funding and less bureaucracy was at the heart of the answer, he suggested. Defra needed to "facilitate the industry to be more efficient by providing a clear and consistent way of dealing with bureaucracy".

Paul Nolan, of the Mersey Forest and the Northern Forest, called for "a presumption for tree planting rather than against it" and said as well as climate change, forestry had a significant role to play in the well-being agenda. He said the UK needed more urban trees, which required local authorities to invest more - and said we needed to look at our green belts, many of which were currently more like green deserts. Nolan felt the climate was right for change, with investors increasingly looking for "good" investments to make improvements to the natural world.

Both Julian Ohlsen of Tilhill Forestry and John Weir of Forestry Commission said foresters had to stress their carbon credentials more forcefully. [Forestry Commission released its position paper Climate Change and Forestry at the show].

"We call ourselves foresters but we are in fact carbon managers," said Ohlsen. "With public and political help we can use carbon sequestration through tree planting as a solution." Weir said that forestry needed "our own Extinction Rebellion moment to showcase us as managers of carbon."

There were some challenging moments, with an audience question about whether the carbon benefits of tree planting were as great as we thought when land preparation and especially soil disturbance was taken into account. However, it was argued that deep ploughing was largely a thing of the past, and that the carbon benefit of the tree growth itself would outweigh temporary soil carbon release in almost all scenarios.

In the session on Changing Your Woodland Business for Climate Change, James Hepburne Scott of Forest Carbon Ltd said achieving the tree planting levels needed to make a difference required "sustained political leadership" and more ambitious planting targets.

He called for funding and support systems to be overhauled to make them much more effective and said a version of the MacKinnon report (the report by a former Chief Planner credited with making planting simpler and quicker in Scotland by removing bureaucratic barriers) was very much needed in England.

FTN WEB RESOURCES



Read Andy's and Alex' blog posts on the climate change seminars at the CWS2019
www.confor.org.uk/ftnweb

Climate change progress report published

The Forestry Climate Change Working Group (FCCWG) published a report at the Confor Woodland Show charting progress against commitments made in the 2018 Climate Change Action Plan.

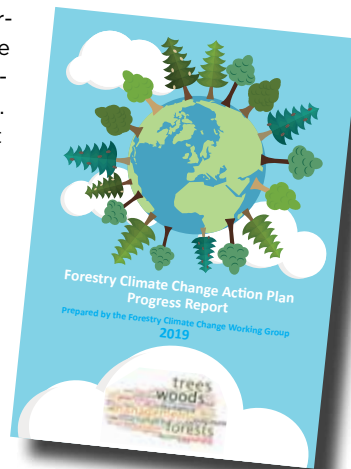
The Climate Change Accord, signed by 35 forestry organisations in 2015 called for a radical reappraisal of the species composition, structure and management of our woodlands to ensure they are resilient to rapid environmental change. The actions on forest policy, research and practice required to bring these aspirations to life were set out in an action plan published by the FCCWG last year.

Over the last year, several independent reports have been published which provide a convincing body of evidence that the speed of environment change is faster, and the potential impacts more severe than previously widely recognised.

We are facing a climate emergency. This strengthens the need and urgency for the action plan to be implemented.

The progress report states that "To date, progress has been limited with little or no opportunity to provide input to policy, government strategy development, the review of regulations or the Science and Innovation Strategy for Forestry in Great Britain". While individual organisations are implementing good initiatives, the FCCWG as a cross sector group has not made significant collective progress.

English Tree Strategy
At the Confor Woodland Show seminar where the progress report was launched, the Forestry Commission



announced its intention to review policies and regulations to identify barriers to woodland owners' ability to deliver adaptation and mitigation measures and to involve the forestry sector, including the FCCWG, in a wide-ranging consultation under the banner of the English Tree Strategy. This will be a unique opportunity to align policy and practice and accelerate the pace of change.

Members of the FCCWG are: CLA, Confor, Defra, Forestry Commission, Forest Research, ICF, Lockhart-Garratt, Natural England, RFS, Sylva Foundation, Woodland Heritage, Woodland Trust

Download the report
<https://rfs.org.uk/media/605364/fccwg-climate-change-adaptation-progress-report.pdf>










- No manual handling. Loads and unloads itself
- Processes logs up to 15 inches diameter
- Produces 6 cubic meters per hour
- Supplied with 2, 4 or 6 way splitter
- Complete one person processing

UK agents for
Halverson
WOOD PRODUCTS, INC.

01685 810148 | info@bioequipmentltd.co.uk
Unit 17, Hirwaun Industrial Estate, Hirwaun, Aberdare CF44 9UP

Heathwood Nurseries Ltd

CELL GROWN TREES.CO.UK

Buy the best of British

Growers of quality trees, shrubs and hedging plants.

Producers of British trees and shrubs from British seed origins in cells, containers and field grown for hedges, gardens, landscaping and woodlands.



www.heathwood.co.uk
01948 840 120 | sales@heathwood.co.uk
The Meadows, Higher Heath, Whitchurch, SY13 2JA

“I thoroughly enjoyed the show; I felt the whole of forestry was very well represented”

RAB Easton, attending the show for the first time, was delighted he made the trip south

Getting close to the venue I realised that the traffic management system had been very well organised with traffic flowing freely; one of my pet hates is arriving at an exhibition only to be held up for ages waiting to park.

I arrived at the show just at 9am, gate opening time, on a sunny opening day, and the car park was already starting to get quite busy with visitors.

There was a clever system for admission with a ticket booth situated before the entrance to the show, which meant pre-paid tickets and members did not have to queue and visitors purchasing tickets were processed quickly.

On entering, I was left wondering which direction to head off in first but luckily there was a signpost and map that showed the layout of the show.

One of the first stalls I visited was **Lamberhurst Engineering Ltd**; this is a well-established forestry business which has been supplying and servicing the range of Seppi mulching and ground care equipment for over twenty years.

A little further along was **RSL Engineering**, which manufactures a lot of the equipment it sells. RSL had an extensive range of forestry attachments at the show which included its own tree shears, timber grapples and landscaping rakes along with firewood processors and log splitters that it supplies and services. I was quite taken by the tree shears, which had been aptly named the Mother Cutter – the logo had been etched into the steel with a plasma cutter. RSL also manufactures its own forwarding trailers/loaders and



log skidder attachments. I thought its equipment looked strong and of very good quality - essential when working with timber.

There were people starting to gather around the two tractor and trailer-mounted **Mus-Max chippers** which were roll-taped off when one of them sprung into action. The Mus-

Max WT 10 XL Z, owned and operated by Wood Energy Wales, was mounted on a Fendt 1050 500 hp tractor and was being fed by a Penz 9LP double extending loader. It was spectacular watching this mighty beast eating large quantities of round wood and processing it into
continued on p33

Top: Traction Assist T Winch from Bio-Equipment;
Above left: Home Forestry's Alstor 840 Pro Combi Forwarder/Harvester
Above right: Horse logging

CONFOR WOODLAND SHOW 2019 REVIEW

Continued from p31

top quality wood chips for the biomass industry. The wood chips were directed from the chipper straight into a Brantner container trailer.

I can't think of a better way to spend a day out than looking at and watching machinery working and chatting to people who are as enthusiastic about forestry as myself.

The field area had a fantastic selection of equipment and machinery to interest everyone working with trees. There was a huge selection of chippers, wood splitters, traction assist winches, work wear, harvesting heads, biomass heads, forwarder trailers, tractors, pickups and loaders, and every row of exhibitors I went down I found something new and exciting.

Walking down one aisle I saw the **Trackplot** stall; Trackplot is a very clever app-based system working in conjunction with the SPOT handheld tracker for keeping lone workers safe. This is lifesaving technology with so many uses in rural locations.

A little further up the aisle was the **Ratchet Shop** where there was a wonderfully simple, inexpensive and timesaving attachment on display. It was a plastic holder that you put one end of your ratchet strap into and then turn the handle and it winds up your ratchet strap into a tight roll.

Timber is not the cleanest cargo to strap and the forest can be a muddy and dirty place during wet periods so ratchet straps inevitably end up wet and dirty. This invention does all the dirty work for you and makes it much easier to throw the strap over your next load. It was being sold for £9, which I thought was exceptionally good value for money and would pay for itself in the first day of use.

Fuelwood had an excellent display of equipment and was demonstrating the Heizohack truck-mounted 14860 woodchipper. This is a highly efficient, versatile chipping unit mounted directly onto a Mercedes-Benz Actros Euro 6 truck. There were other trailer-mounted Heizohack chippers on display with a good variety of the Japa and Transaw firewood processors, kindling machines, Moheda loaders and a selection of the other wood processing equipment that Fuelwood supplies.

Amongst the machinery and equipment stalls were other exhibitors who were able to offer on the job training courses in forestry and



arboriculture and others offering **first aid training** courses including the +F, which is specifically for forestry workers/operators. There were **tree nursery** stalls able to offer advice on planting and plant care, charcoal manufacturers, pest control specialists, vandal proofing machine cabs and specialised companies which buy standing timber or will harvest and market timber for landowners.

The **Forestry Commission** had a large marquee with experienced employees on hand to offer advice on forest policies and regulations. They were happy to explain to the visitors the role they play in today's forestry. They had an interesting selection of artefacts and photographs from the bygone era of forestry, including a Forestry Commission Austin A35 van.

The **Confor** tent was near the entrance for the woodland area and was hosting many seminars and lively discussions on the current topics affecting our industry.

I then entered the woodland area; this was a beautiful area of mature, well-thinned spruce and hardwood trees.

It was clearly marked with a one-way system through the wooded area and the first display I saw was

Top: Mus-Max WT10 and 12 Woodchippers from B Price

Above left: Fuelwoods Heizohack Chipper Truck

Above right: Wesstech Woodcrackers Tree Shears

Jas P Wilson, which had a large display with its own Botex loaders and trailers being demonstrated, FAE mulchers and Posch firewood processors.

Just along from there were some interesting and unusual equipment supplied by **Reeds Ltd**, including some clever fencing attachments for fitting onto small excavators. One had a hydraulic auger fitted where the bucket is normally attached on the boom; this was perfect for drilling the holes for straining posts and gateposts as it is a much narrower hole than can be manually dug out. The posts are far more secure and less likely to move when straining long wire lengths against them or hanging heavy gates. Another clever attachment was the hydraulic post knocker; bolted onto the end of the boom with a plunger shaped bottom that fits over the fencing stake and works via a hammer action that will drive the stake into the ground securely. The excavator's boom can be adjusted during this to ensure the stake is kept level. A further useful attachment was the hydraulically adjustable wheeled grader which is pulled behind a tractor for forest road maintenance. Forest roads need to

Continued on p35

CONFOR WOODLAND SHOW 2019 REVIEW

Continued from p33

be kept in good order to keep timber moving from harvesting sites, for fuel deliveries and to reduce damage and punctures to engineers and operators' vehicles.

Not far away there was the opportunity to try out your 'Robin Hood skills' at the **field archery** area, which looked to be popular with the visitors.

Next on my travels was the **Forestry Workers Zone**; this was a masterful idea. Industry experts were giving demonstrations on the correct way to perform chainsaw maintenance, hydraulic systems and how they work, and tuition on how to strip down a hydraulic cylinder along with career advice on finding work in forestry and arboriculture.

This is something I would like to see developed further; it is a wonderful opportunity for youngsters and people looking for a change in career to discover what the industry can offer them.

Paul Vidgen had the new Prinoth Raptor 500 Mulcher displayed along with Trevi tree shears, tractor mounted scarifier and other land clearing equipment. Paul has been supplying AHWI Prinoth equipment in the UK for over 20 years.

Further along was **Marshall Agricultural Engineering**; the company was demonstrating the Westtech tree shears and the DinaSaw automatic band saw sharpener, and the mighty little Iron Horse mini grapple skidder was showing off its capabilities. There were KRPA forwarding trailers with loaders, 3pt linkage skidder winches, grapples and firewood processors that you could have a good look around. There was equipment to suit every pocket from occasional users to everyday professional use.

Home Forestry was exhibiting a large diameter trailer-mounted Rabaud log splitter and tree shears attached to a tele-handler for working in the crowns of trees. The company's own designed Workbox was being displayed; this is both a bundled oil/tool store and workstation. Nathan Home was demonstrating the 8WD Alstor 8x8 840 Combi Pro; this can either be used as a low impact mini forwarder or can easily be converted into a stroke harvester. It can be legally towed on a trailer behind most 4WD vehicles.

Caledonia Forestry had also



made the long trip south and had a nice display of Palax firewood processors with a Kesla forwarding trailer and loader. The loader had a side-mounted hydraulic winch which was a great idea for getting wood that was hard to reach or awkward to get to into range of the loader to pick up.

There were some very talented **chainsaw carvers** on the woodland circuit who were drawing quite a crowd when I was there. I saw three of them and one was carving a squirrel, another a bear and the third one seemed to be carving a character from Lord of the Rings.

The **horse logging** was great to see; they were snigging out single logs and the horses appeared to be in their element in the forest. I am pleased there is so much interest in this as it would be a sad day for the industry if there were no more working horses.

The final stop before arriving back at the field was the **Riko** forestry display. This was spread over a big area with a large selection of forestry and

Top: McConnell's Ground Care Equipment

Above right: chainsaw carvings

Above left: Hydraulic post knocker from Reeds

firewood equipment. One item really caught my eye – the portable Timberly Sawmill. The larger 14 hp motor version was on offer at the show for £3050 +VAT and will cut up to 55cm slabs. You can keep adding sections to it so it will cut up to the length of the bed it runs on. I have to admit to being sorely tempted.

Back on the field I wanted to see the **UK loggers** competing for a place on the team to represent the UK at the World Logging Championship. The ones I saw were well matched in the different skills so it looked like it was going to be a tough battle until the selections were made.

I thoroughly enjoyed the show; I felt the whole of forestry was very well represented with lots of events, stalls, demonstrations and seminars to please everyone who has an interest in forestry and trees. I am looking forward to returning in two years' time.

Rab Easton is editor of Forest Machine Magazine

www.forestmachinemagazine.co.uk



Schools at show for first time

Three hundred children from two local primary schools enjoyed the Confor Woodland Show at Longleat. Staff from Forestry England provided the meet and greet for the school groups and set them off round the show with volunteer industry guides. Huge thanks go to the exhibitors who welcomed the groups to their stands and explained what they did.

The army of eight industry volunteers gave up their time to show the children round; some have been regulars at APF exhibitions, others were new to it this time round – it's not such a hardship though from their comments:

"I had a great time as always with the children who are very clued up these days with environmental matters."

"It was great fun and I enjoyed it as much as the kids. They definitely loved seeing the machinery working and chatting to people."

The two local schools, Mere School and Horningsham Primary School were brought to the show on shuttle buses organised by the show committee. From their comments after the show they too had a great day out:

"We had a fantastic day - we can't thank you and all those involved enough for giving us such a great opportunity. The children absolutely loved it and were buzzing when we got back to school!"

"We have had the most tremendous day with you today - thank you for allowing us to come at no cost. The staff and children are 'buzzing' with excitement and appreciated how well everything was organised and how friendly all your helpers were."

"I have had comments from both the teaching assistants and parents that having the knowledgeable volunteers to show them around makes all the difference."

School visits will be back at APF 2020!

Top loggers chosen for UK team

After two days of intense competition at the show, there is now a UK team for the World Logging Championships in Belgrade, Serbia 2020.

Six of the best loggers from the UK started out hoping to make the Top 3 by the end of Friday. Scores from three rounds of competition were added together to select the team. Congratulations to Mark Edwards, Richard Elliott, and Gethin Hughes in the professional class. Gethin Jones will be representing the UK in the Under 24 class.

UK Loggers would like to thank the sponsors, Husqvarna UK, Aspen, Tillhill Forestry, Euroforest, Clifford Jones Timber, Fisa and Confor for hosting the competition. Without all of you we would not be representing the UK in Serbia next year.

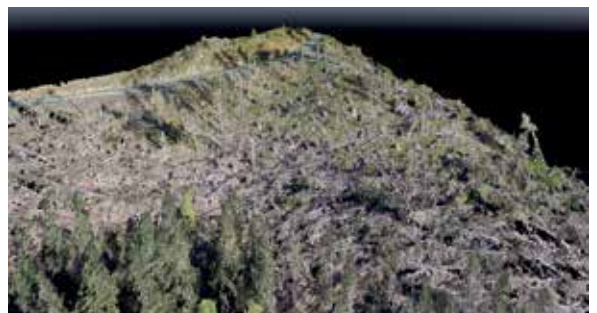


Pictured (l to r): Mark Edwards, Richard Elliott, Gethin Hughes and Gethin Jones

Using drones in forestry

At the show, Artio Geomatics and Barle Forestry held seminars and demos on UAVs in forestry. One of the more exciting applications of UAV mapping technology is the opportunity it presents for surveying the invariably treacherous windblow site. Using a UAV, Artio Geomatics can capture imagery of the site and render an accurate 3D model, from which a wealth of precise data can be generated. Such data includes stocking densities, DBHs, species mix, the degree (or percentage) of the slope, and precise timber heights, volumes & quality. This is all without having to step foot in the area, greatly reducing operational risk and cost.

www.artio-geomatics.co.uk



MEET THE VISITORS



Fahra and Gareth

Fahra works for Forestry England and Gareth for Forest Services. They are based in the Midlands and came to the show as visitors, to keep up-to-date on what's happening in the forestry sector.



A student's perspective

Young conservation student Martha, who has an interest in the forestry sector, happened to attend the AGM. Here are her own thoughts on how the forestry sector could future proof itself.

I am a conservation student and attended the CWS2019 because I am interested in learning more about the land use sector and how I can get actively involved in shaping it. I passed the Confor tent and spontaneously joined a meeting that had already started. I started to engage in the discussion that was going, not knowing that I was actively participating in the Confor AGM!

The Confor board were talking about how to spread awareness and get people involved with Confor. I thought it might be useful to share my views on this, from the outside perspective of an interested young student keen to get involved in land use and sustainability.

I could think of several ways to entice the younger generation to get involved with the sector:

- More social media presence to spread awareness and create communities
- More engagement with colleges and universities. This can be done by teaching students about what you do and by involving them in your projects.
- Have quarterly meetings with student members to see what they are doing and how you can support them or get them involved. This would give them a stronger sense of community with Confor.



Gareth and Phoebe with Rory

The family lives in Surrey and Gareth (31) runs a coppicing business. They come to see the latest machinery, and for a nice day out.



Marjorie and Ronald

From Fawley near Southampton, the couple have been coming to forestry and land use shows for decades. Ronald is the fourth generation of a forestry family and is now retired.



Andrew, Steven, Neil, Lewis, Nathan and Ed

They work together as forestry contractors and came to support one of their colleagues, who is competing for the UK loggers.



Robin (left) and Alan

Cattle farmers who have diversified into firewood production, Robin and Alan are based in Somerset and are interested in the latest machinery for firewood processing.

FUELWOOD

japa

Kindling & Firewood Processors

- ▶ Circular saw & chainsaw processors
- ▶ 6", 8" & 10" length kindling options
- ▶ Up to 14" capacity
- ▶ Huge productivity
- ▶ Finance available
- ▶ Designs specifically for processing UK timber

FUELWOOD

FTN5-17
Fuelwood (Warwick) Ltd
www.fuelwood.co.uk
t: 01926 484673